

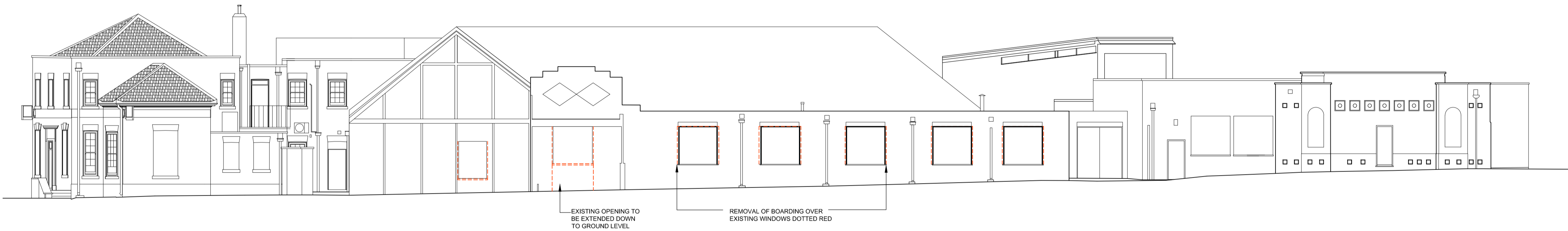
© Mountford Pigott LLP 2012
 Reproduction in whole or in part by any means is prohibited without the prior permission of Mountford Pigott LLP.
 This drawing is only to the stated scale if it is printed correctly. MPLLP cannot accept responsibility for the incorrect scaling of drawings printed by third parties.
 All dimensions are in mm unless otherwise stated.
 If this drawing forms part of an application for planning permission on behalf of the applicant named below, it shall not be used for any other purpose without the express permission of Mountford Pigott LLP.
 This drawing may incorporate information from other professionals. Mountford Pigott LLP cannot accept responsibility for the integrity and accuracy of such information. Any clarification and/or additions that are required appertaining to such information should be sought from the relevant profession or their appointment representative as listed below.

LIST OF INFORMANTS:
 SURVEY: THE GORDON TOMALIN PARTNERSHIP, DRG NO 9498.01
 INFORMANT 2
 INFORMANT 3
 INFORMANT 4
 INFORMANT 5

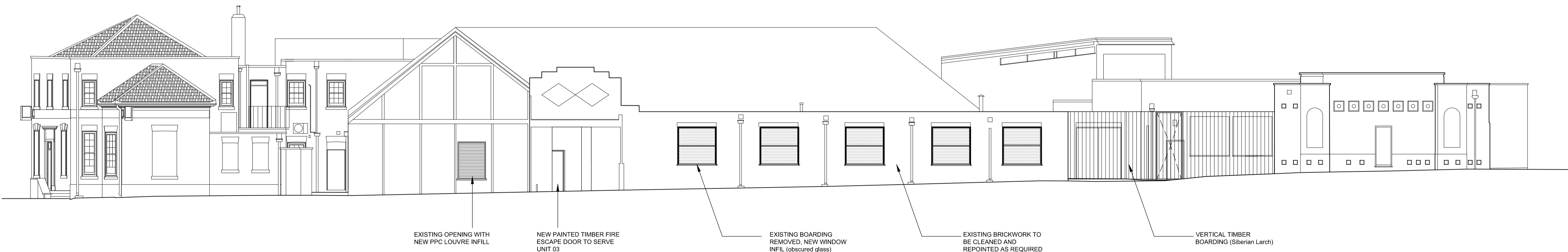
REVISIONS	DATE	DRN	REV
PLANNING APPLICATION	01.04.14	SN	-



NORTH ELEVATION - PHOTO-MONTAGE



NORTH ELEVATION - EXISTING



NORTH ELEVATION - PROPOSED

A Development by:
Pan Albion Group
 Property Development

CHESTERTON ROAD, CAMBRIDGE

MountfordPigott
 Architecture Masterplanning Design

PROPOSED
 ELEVATIONS 01
 1583-PL 14

1:100@A1& 1:200@A3 09.09.13
 DRAWN BY SN

This drawing contains critical information in colour. To ensure this information is legible, only print or copy this drawing in full colour.